

# TRANTECH TT8 ULTRASONIC BULK WATER METER



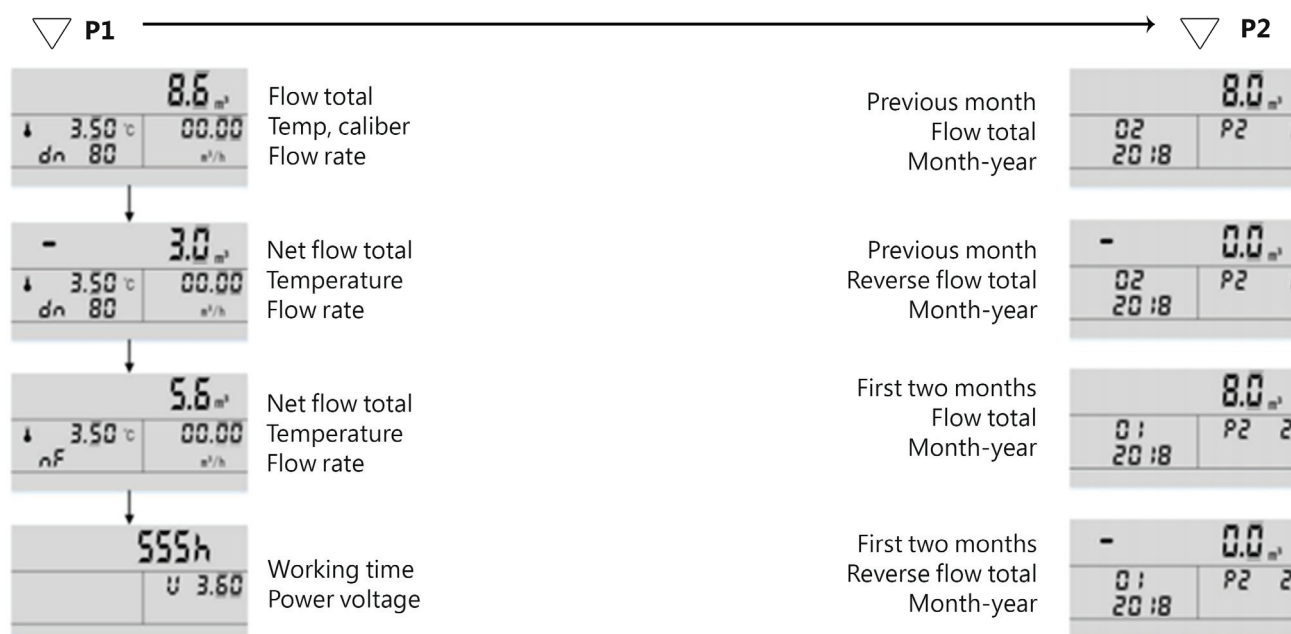
## Features

- IP68 Protection
- Water temperature monitoring
- Double beam for high accuracy Q1/Q3=R250
- No moving parts, no damage.
- Displays rate, total, reverse flow, Battery status etc
- Pulse outputs and RS485 communication (optional)

## Overview

The Trantech TT8 Ultrasonic bulk water meter utilises double beam advanced transit time measurement technology to provide accurate and precise flow measurement. It has remarkably low power consumption providing many years of hassle free operation and wide measuring ranges to record even the lowest of flows. The durable all steel enclosure has IP68 protection providing quality operation in even the harshest of environments. Widely used in urban water supply networks, water resource management, irrigation, landscape management and industrial automation applications.

## Display Functions



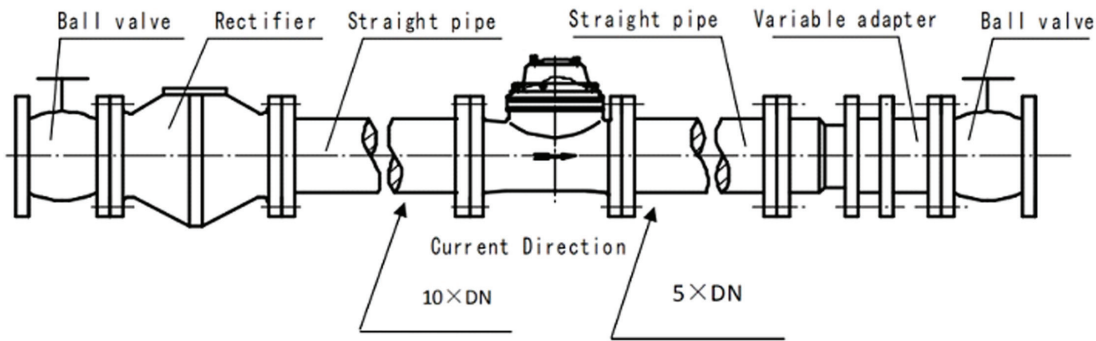
P1: Regular display P2: Historical data - 24 months



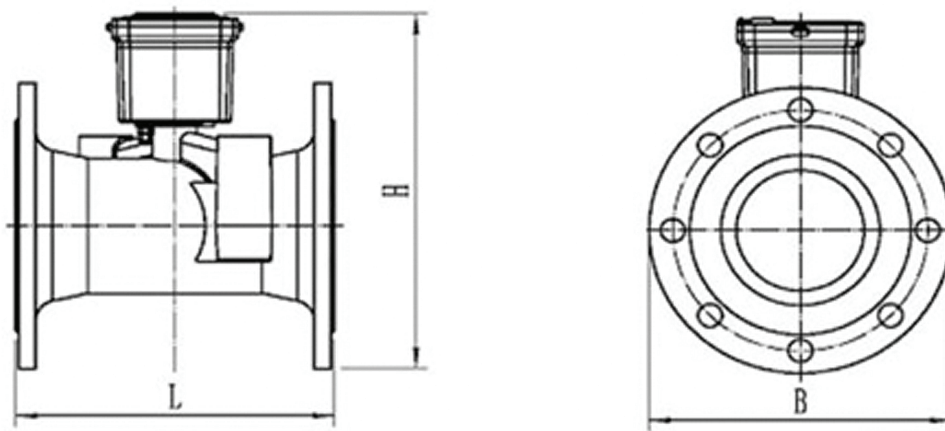
Nominal diameter (mm)	50	65	80	100	125	150	200	250	300
Max flow Q4 (m <sup>3</sup> /h)	31.25	50	78.75	125	200	312.5	500	787.5	1250
Nominal flow Q3 (m <sup>3</sup> /h)	25	40	63	100	160	250	400	630	1000
Transitional flow Q2 (m <sup>3</sup> /h)	0.16	0.256	0.4	0.64	1.024	1.6	2.56	4.03	6.4
Min flow Q1 (m <sup>3</sup> /h)	0.1	0.16	0.252	0.4	0.64	1	1.6	2.52	4
Protection class	IP68								
Measuring range	Q3/Q1= R250 (R400 optional)								
Accuracy class	Class 2								
Battery life	>8years								
Temperature class	T50								
Pressure loss class	ΔP63								
Flow profile sensitivity class	U10/D5								
Electromagnetic environment class	E1								
Working pressure	1.6Mpa								
Max flow indication (m <sup>3</sup> )	9999999.9								
Reverse flow indication (m <sup>3</sup> )	9999999.9								
Output Signal	RS485, Pulse output, GPRS								
Installation position	Horizontal or Vertical								



## Typical Installation



## Dimensions



## Technical Parameters

Nominal Diameter	Length L	Width B	Height H	Flange Connection		
				Flange Diameter	Bolt Circle Diameter	Bolt Size-M
mm						
DN50	200	170	215	170	125	4-M16
DN65	200	185	220	185	145	4-M16
DN80	225	200	235	200	160	8-M16
DN100	250	220	255	220	180	8-M16
DN125	250	250	285	250	210	8-M16
DN150	300	285	335	285	240	8-M20
DN200	350	340	405	340	295	12-M20
DN250	450	405	470	405	355	12-M24
DN300	500	460	525	460	410	12-M24

Note : Flange dimensions conform to ISO7005-1:1988 standards. Custom or alternative flanges can be provided on special order