



Service Intended

Suitable for media such as air, water, oil & gases that do not attack copper alloy or stainless steel parts or will obstruct the pressure system. Typical applications will be in the hydraulic, pneumatic, refrigeration, steam, chemical and food and beverage industry.

Case Details

Nominal Dia: 40, 50, 63, 80, 100, 160mm
Material: Stainless steel 304

Bezel

S/Steel rolled ring type - tamper proof.
Material: Stainless steel 304

Pressure Connections

Material: Type 3: Brass. Type 4: Stainless steel 316
Sizes: 50, 63, 80, mm dia: 1/8" & 1/4" in BSP or NPT
Sizes: 100, 160mm dia: 1/4", 3/8" & 1/2" in BSP or NPT
(Position: See "Mounting Configurations".)

Mounting Flange

Material: Polished stainless steel 304

Pressure Element

Material: Type 3: Cu-alloy Type 4: Stainless steel 316

Geared Movement

Material: Clockwork brass or stainless steel.

Pointer

Collet: Aluminium or brass Blade: Black aluminium

Dial

Material: Aluminium, white with black lettering.

Window

Instrument glass or plexiglass (*plexiglass recommended for food applications*)

Weather Protection

IP 65 Dust & weather proof.

Working Pressure

Steady: Full scale value
Fluctuating: 90% of full scale value
Short Period: 130% of full scale value
For pulsating pressure, the use of an inlet restrictor and/or liquid filling is recommended.

Accuracy Class

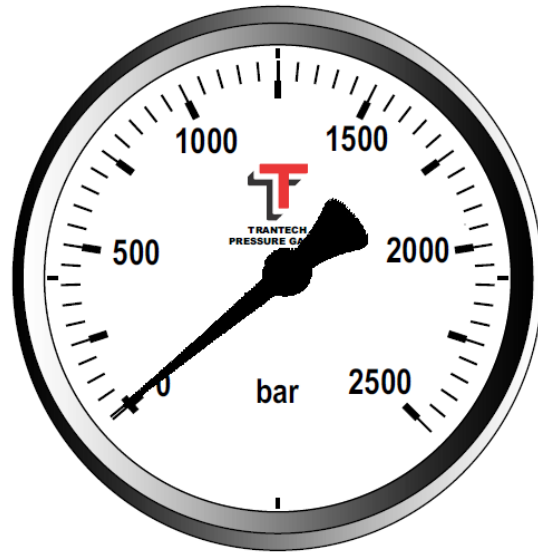
40mm dia: 2.5
50mm, 63mm & 80mm dia: Class 1.6
100mm, 160mm dia: Class 1

Operating Temperature

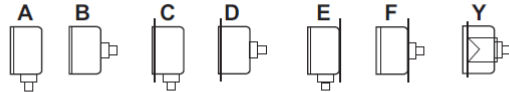
Ambient: -20 °C to + 60 °C
Medium: +70 °C (*soldered tube*): + 100 °C (*brazed / tig welded tube*) *For live steam use, a syphon tube is recommended.*

Optional Extras

Calibration Certificate
Customized scale plates (*customer logo, red line, etc*)
Special Dials, other than standard (*dual scale, bar, psi*)
Damped movement (*Vibrageauge*)
Colour Coding of dial
Drag pointer (*maximum set pointer*)
Micro adjustable pointer
Blow out disc
Diaphragm seals fitted



MOUNTING CONFIGURATIONS



- A: Bottom connection, no flange
- B: Rear connection, no flange
- C: Bottom connection, front flange
- D: Rear connection, front flange
- E: Bottom connection, rear flange
- F: Rear connection, rear flange
- Y: Rear con. narrow front ring (clamp mtg)

STANDARD PRESSURE RANGES

Ranges	Figure Interval	Minor Graduations	Ranges	Figure Interval	Minor Graduations
Pressure			Pressure		
0/2.5 kPa	0.5	0.05	0/6 MPa	1	0.1
0/4 kPa	1	0.1	0/10 MPa	2	0.2
0/6 kPa	1	0.1	0/16 MPa	2	0.2
0/10 kPa	2	0.2	0/25 MPa	5	0.5
0/16 kPa	2	0.2	0/40 MPa	10	1
0/25 kPa	5	0.5	0/60 MPa	10	1
0/40 kPa	10	1	0/100 MPa	20	2
0/60 kPa	10	1			
0/100 kPa	20	2	Vacuum		
0/160 kPa	20	2	-100/0 kPa	20	2
0/250 kPa	50	5	Compound		
0/400 kPa	100	10	-100/0/150 kPa	50	5
0/600 kPa	100	10	-100/0/300 kPa	100	10
0/800 kPa	100	10	-100/0/500 kPa	100	10
0/1000 kPa	200	20	-100/0/700 kPa	100	10
0/1600 kPa	200	20	-100/0/900 kPa	200	20
0/2500 kPa	500	50	-100/0/1500 kPa	500	50
0/4000 kPa	1000	100	-100/0/2400 kPa	500	50

Customized and other scales such as bar / psi / inHG etc. are available on request

HOW TO ORDER USING OUR PART NUMBERS

R 3 A 100 G 1/2 B 1000 kPa

Casing Type: _____

Gauge Type: _____

Configuration: _____

Dial Size: _____

Glycerine filled / Dry: _____

Connection Size: _____

Pressure Range: _____