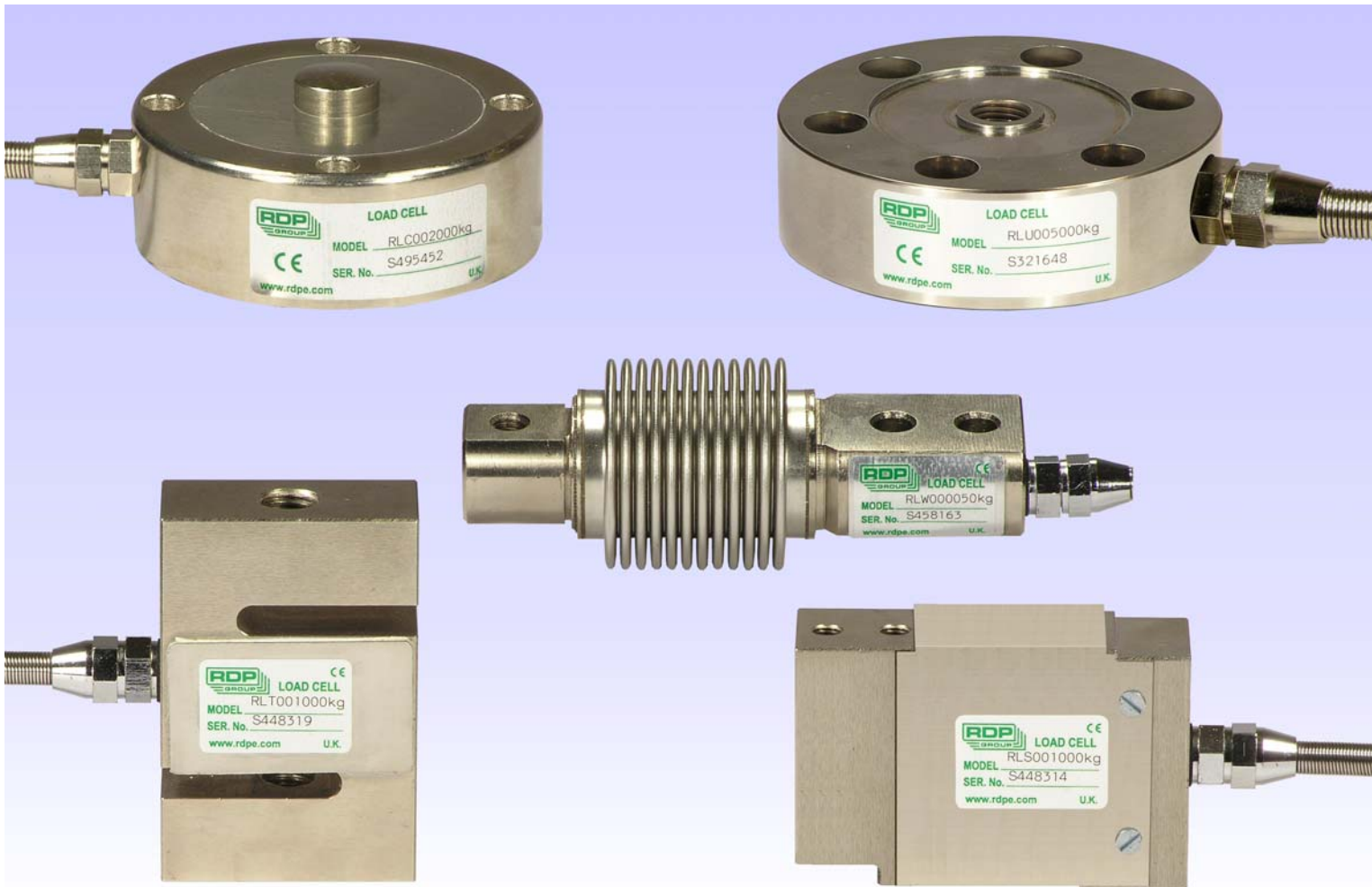


Low Cost - High Performance

## Load Cells

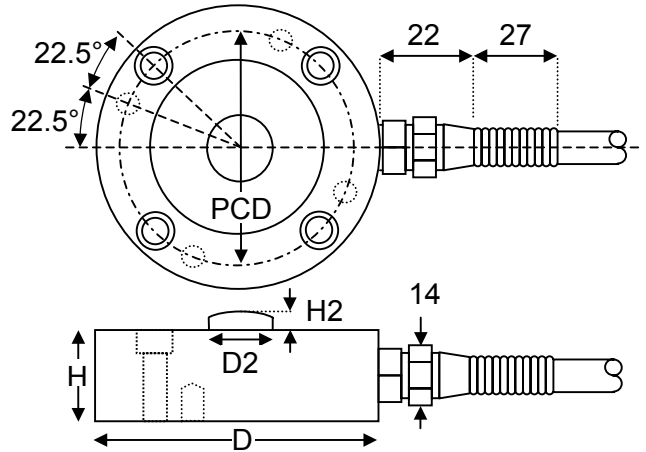


Testing, Weighing, Batching Scales,  
Special Production Machines and  
General Force Measurement Applications



# Model RLC Linearity $\pm 0.03\%$

Compression Load Cells  
Ranges 250kg to 15000kg

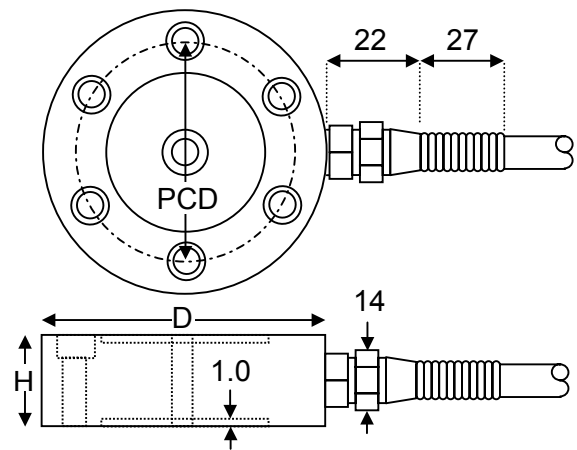


Unless otherwise specified, all dimensions are in mm

Load Range	D	H	D2	H2	PCD	Mounting Hole Top	Mounting Hole Bottom
250kg	80	28	16	4.0	67	M6 cap head	M6, 12 deep
500 & 1000kg	82	28	17	4.5	68	M6 cap head	M6, 12 deep
2500 & 5000kg	100	32	25	6.0	83	M8 cap head	M8, 12 deep
10000kg	116	39	37	7.0	96	M8 cap head	M8, 12 deep
15000kg	121	40	38	9.0	100	M10 cap head	M10, 15 deep

# Model RLU Linearity $\pm 0.03\%$

Tension/Compression Load Cells  
Ranges 250kg to 10,000kg



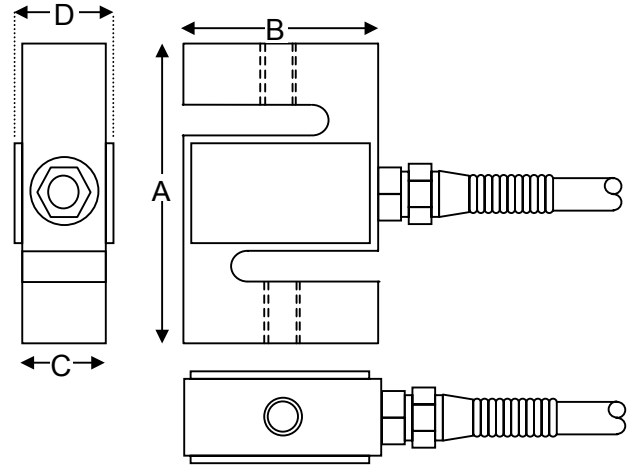
Load Range	D	H	Centre Thread	PCD	Mounting Hole Details
250 & 500kg	75	25	M10 x 1.5	57	6 off M6 x 1.0 cap head
1000 & 2500kg	90	25	M12 x 1.75	66	6 off M8 x 1.25 cap head
5000kg	140	45	M24 x 3.0	115	8 off M10 x 1.5 cap head
10000kg	152	45	M36 x 4.0	124	8 off M12 x 1.75 cap head

## Specification (RLC & RLU)

Linearity	$\pm 0.03\%$ F.S.	Operating Temp	-20 to +60 °C
Hysteresis	$\pm 0.03\%$ F.S.	Compensated Temp	-10 to +40 °C
Repeatability	$\pm 0.03\%$ F.S.	Excitation	10V cal (15V max)
Output	2.0 mV/V $\pm 10\%$	Bridge Resistance	350/700 $\Omega$ (nominal)
Zero balance	$\pm 2\%$ F.S.	Overload capacity	50%
Zero Tempco	$\pm 0.002\%$ F.S. / °C	Material	Tool steel (Stainless steel optional)
Span Tempco	$\pm 0.002\%$ F.S. / °C	Sealing	IP65

# Model RLT Linearity $\pm 0.03\%$

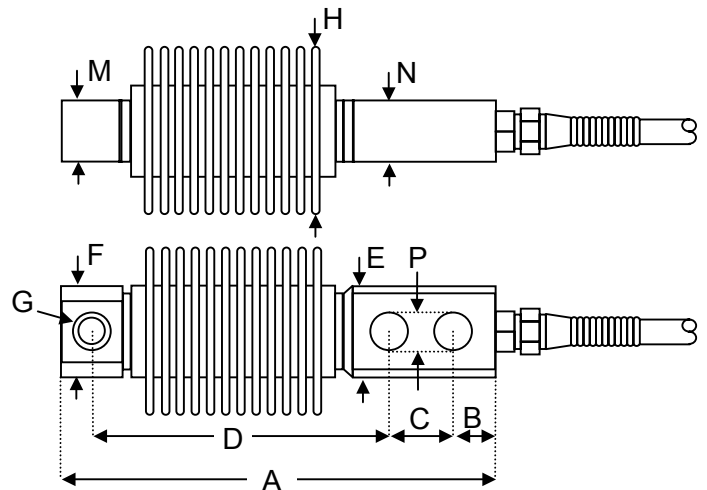
Tension Load Cells  
Ranges 5kg to 2,500kg



Load Range	A	B	C	D	Mounting Hole Details
5, 10kg	63.5	50.8	12.7	19.1	M8 x 1.25
20, 50 & 75kg	63.5	50.8	12.7	19.1	M8 x 1.25
100kg	76.2	50.8	19.1	25.4	M10 x 1.5
250, 500 & 750kg	76.2	50.8	19.1	25.4	M12 x 1.75
1000 & 1500kg	76.2	50.8	25.4	31.8	M12 x 1.75
2000 & 2500kg	108	76.2	25.4	31.8	M18 x 1.5

# Model RLW Linearity $\pm 0.03\%$

Industrial Weighing Cells  
Ranges 10kg to 1500kg



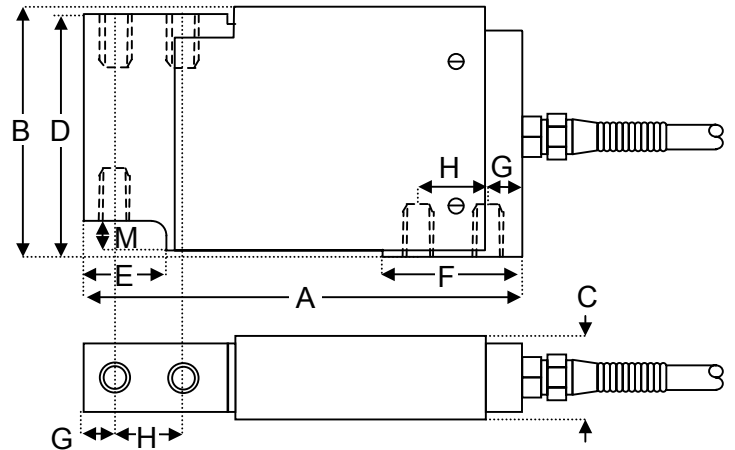
Load Range	A	B	C	D	E	F	G	H	M	N	P
10, 25, 50, 100, 250kg	120	10	18	82	Ø36	Ø25.5	M8	Ø45	20	20	8.5
500, 1000 & 1500kg	210	14	40	133	Ø60	Ø37	M12	Ø60	36	25	13

## Specification (RLT & RLW)

Linearity	$\pm 0.03\%$ F.S.	Operating Temp	-20 to +60 °C
Hysteresis	$\pm 0.03\%$ F.S.	Compensated Temp	-10 to +40 °C
Repeatability	$\pm 0.03\%$ F.S.	Excitation	10V cal (15V max)
Output	2.0 mV/V $\pm 10\%$	Bridge Resistance	350Ω Nominal
Zero balance	$\pm 2\%$ F.S.	Overload capacity	50%
Zero Tempco	$\pm 0.003\%$ F.S. / °C	Material	Tool steel (Stainless steel optional)
Span Tempco	$\pm 0.003\%$ F.S. / °C	Sealing	RLW=IP67, RLT=IP65

# Model RLS Linearity $\pm 0.02\%$

Single point, weighing scale load cell  
Ranges 5kg to 100kg



Load Range	A	B	C	D	E	F	G	H	M	Mounting threads
5, 10, 20, 50 & 100kg	118	63.5	30	63	20	32	7.4	19.05	7	M6, 25mm deep

Specification (RLS)			
Linearity	$\pm 0.02\%$ F.S.	Operating Temp	-20 to +60 °C
Hysteresis	$\pm 0.02\%$ F.S.	Compensated Temp	-10 to +40 °C
Repeatability	$\pm 0.02\%$ F.S.	Excitation	10V cal (15V max)
Output	2.0 mV/V $\pm 10\%$	Bridge Resistance	350 $\Omega$ Nominal
Zero balance	$\pm 2\%$ F.S.	Overload capacity	50%
Zero Tempco	$\pm 0.0025\%$ F.S. / °C	Material	Aluminium alloy
Span Tempco	$\pm 0.0025\%$ F.S. / °C	Sealing	IP65

RDP are able to supply an extensive range of single point load cells for weighing scale and other low cost applications, all offering you excellent performance at very low cost. If you have a price sensitive high volume application please call our Technical Sales Department to discuss the best solution to your problem.

**THIS SHORT CATALOGUE ONLY ILLUSTRATES A SMALL PART OF RDP'S RANGE OF TRANSDUCER PRODUCTS. IF YOU CANNOT SEE WHAT YOU NEED HERE EITHER GO TO OUR WEBSITE OR CONTACT OUR SALES DEPARTMENT FOR FURTHER DISCUSSION OF YOUR APPLICATION.**

**WE ALSO MANUFACTURE COMPLETE SIGNAL CONDITIONING AND PROCESSING INSTRUMENTATION.**



Due to the RDP Electronics policy of on-going development, specifications may change without notice.

Head Office:  
©RDP Electronics Ltd, Grove Street  
Heath Town, Wolverhampton  
WV10 0PY, United Kingdom.  
Tel +44 (0) 1902 457512  
Fax +44 (0) 1902 452000  
www.rdpe.com, sales@rdpe.com

Distributor:

20051102 RLXUK

